

SC 210

(June
2006)

Double-side skin construction on bulk carriers

(regulations XII/1.4 and XII/6.2)

Regulation XII/1.4 Definitions

Regulation XII/1.4 as contained in resolution MSC.170(79), entering into force on 1 July 2006, reads:

4 Double-side skin means a configuration where each ship side is constructed by the side shell and a longitudinal bulkhead connecting the double bottom and the deck. Hopper side tanks and top-side tanks may, where fitted, be integral parts of the double-side skin configuration.

Regulation XII/6.2 Structural and other requirements for bulk carriers

Regulation XII/6.2 as contained in resolution MSC.170(79), entering into force on 1 July 2006, reads:

2 Bulk carriers of 150 m in length and upwards constructed on or after 1 July 2006, in all areas with double-side skin construction shall comply with the following requirements:

.1...

.2 Subject to the provisions below, the distance between the outer shell and the inner shell at any transverse section shall not be less than 1,000 mm measured perpendicular to the side shell. The double-side skin construction shall be such as to allow access for inspection as provided in regulation II-1/3-6 and the Technical Provisions referring thereto.

.1 The clearances below need not be maintained in way of cross ties, upper and lower end brackets of transverse framing or end brackets of longitudinal framing.

.2 The minimum width of the clear passage through the double-side skin space in way of obstructions such as piping or vertical ladders shall not be less than 600 mm.

....

.3 ...

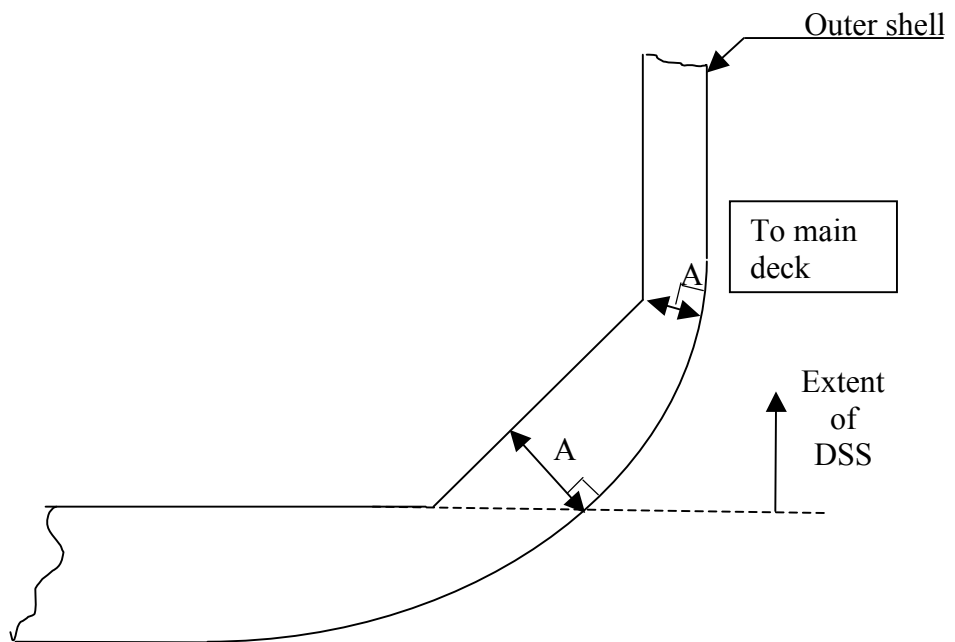
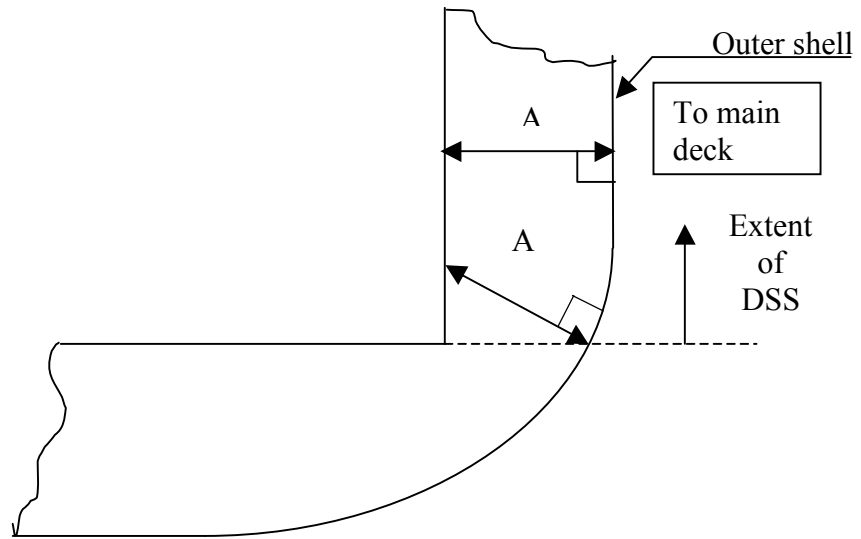
Interpretation

1. The extent of the double-side skin defined in regulation XII/1.4, where the 1000 mm minimum distance specified in XII/6.2.2 is to be met, is to be measured perpendicular to the outer shell from the top of the double bottom to the main deck, as indicated in the attached sketches.

2. The 1000 mm minimum distance specified in XII/6.2.2 is measured between the outer shell and the inner shell and shall be maintained throughout the whole double-side skin construction as defined in paragraph 1, above, and as indicated in the attached sketches.

Note: This UI is to be uniformly implemented by IACS Societies from 1 July 2006.

Distance between inner and outer shell in way of double-side skin



The value of A shall not be less than 1000mm

END